

**RAYMOND WEIL**  
GENEVE

INSTRUCTIONS FOR USE

**NABUCCO CUORE CALDO**  
LIMITED EDITION



**NABUCCO CUORE CALDO**  
LIMITED EDITION





RAYMOND WEIL  
GENEVE

BASE 1000  
500  
400  
350  
300  
270  
250  
240  
210

190  
180  
170  
160  
150

## INTRODUCTION

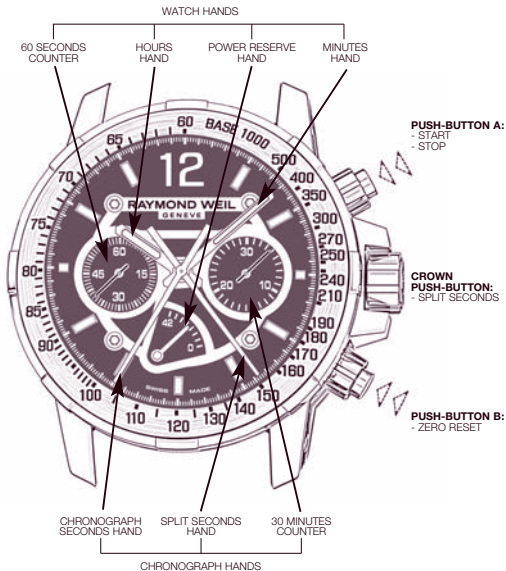
**W**e congratulate you on having chosen a watch from the prestigious RAYMOND WEIL collection, the living expression of masterful design and of the continuous quest for top quality, which have been the hallmarks of the Brand since its creation.

Your watch is fitted with a RAYMOND WEIL self-winding chronograph movement calibre ETA 7750 with an exclusive complication module, hand-assembled with care by our master watchmakers according to the most rigorous quality standards of the Swiss watch industry.

Your RAYMOND WEIL **Nabucco Cuore Caldo** Chronograph is fitted with a screw-down crown and screw-down push-buttons. Before winding the watch or setting the time, it is therefore necessary to unscrew the crown by pulling it straight out and turning it anti-clockwise. Before using the chronograph it is necessary to unscrew the push-buttons. After completing all settings, press lightly on the crown or push-buttons, while turning them clockwise, and screw them back in gently in order to preserve your watch's water-resistance.

In order to guarantee the perfect functioning of your RAYMOND WEIL watch for many long years, we thank you to pay close attention to the advice contained in these Instructions for Use as well as in the International Guarantee booklet.

# DESCRIPTION OF THE DIAL

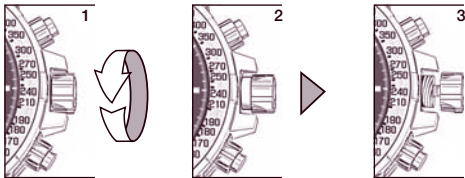


## SETTING THE TIME

Your RAYMOND WEIL **Nabucco Cuore Caldo** Chronograph is fitted with a movement vibrating 28,800 times each hour with a power reserve of 42 hours. The power reserve is indicated in hours, in a sector at 6:30



In order to adjust the time, unscrew and then pull the crown out to position 3 and turn it forwards or backwards until the hands indicate the desired time.



After setting the time, always push the crown back in to position 1, in order to restart the hands and screw it back in gently to preserve your watch's water-resistance.

- 1 Screwed-down crown
- 2 Manual winding position
- 3 Time setting

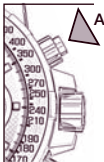


## USE OF THE CHRONOGRAPH

The automatic winding calibre fitted in your **Nabucco Cuore Caldo** Chronograph is equipped with a 31-ruby split-seconds chronograph with a column wheel. The chronograph function can only be used when the crown is in position 1.

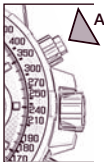
### START

Press push-button **A** to activate the seconds hand of the chronograph. If the timed activity lasts longer than 60 seconds, the time elapsed will appear progressively on the minutes counter.



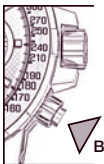
### STOP

Press push-button **A** a second time to stop the chronograph and obtain the time that has elapsed (in minutes and seconds). By pressing push-button **A** again, timing is restarted immediately. Thus you can measure several consecutive time durations.



### RESETTING TO ZERO

After having stopped the chronograph by pushing on push-button **A**, press push-button **B** in order to reset all the chronograph counters to zero. Your watch is now ready to start timing again. After completing this resetting, press lightly on the crown, while turning it clockwise, and screw it back in gently in order to preserve your watch's water-resistance.



## USE OF THE SPLIT-SECONDS FUNCTION

The split-seconds mechanism is particularly useful for timing simultaneous phenomena starting at the same time, but of different duration, such as sporting events in which several competitors are taking part.

An additional hand is superimposed on the chronograph seconds hand. Pressure on push-button **A** starts both the hands, which remain superimposed as long as the split-seconds mechanism is not blocked. This is done by pressing the push-button integrated in the crown. The split-seconds hand stops, while the chronograph hand continues to move.

After recording, the same push-button is pressed a second time, releasing the split-seconds hand, which instantly joins the still-moving chronograph hand, synchronizing with it, and is thus ready for another recording.

Pressure on push-button **B** brings the four hands back to zero simultaneously, provided the split-seconds hand is not blocked.

Your **Nabucco Cuore Caldo** Chronograph is equipped with a tachometric scale, enabling the measurement of speed in km/h.

**RAYMOND WEIL S.A.**

Avenue Eugène-Lance 36-38

P.O. Box 1569

1211 Geneva 26

Switzerland

Tel: +41 (0) 22 884 00 55

Fax: +41 (0) 22 884 00 50



**GENERAL INFORMATION**

[info@raymond-weil.ch](mailto:info@raymond-weil.ch)

**AFTER-SALES SERVICE**

[customer-service@raymond-weil.ch](mailto:customer-service@raymond-weil.ch)

**WEBSITE**

[www.raymondweil.com](http://www.raymondweil.com)